

St. Tammany Parish, Louisiana
Final Integrated Feasibility Report and
Environmental Impact Statement

Annex 1 to the Engineering Appendix D

February 2024

St. Tammany Feasibility Study: Lacombe (Alternative 4)



U.S. Army Corps of Engineers
New Orleans District

Legend

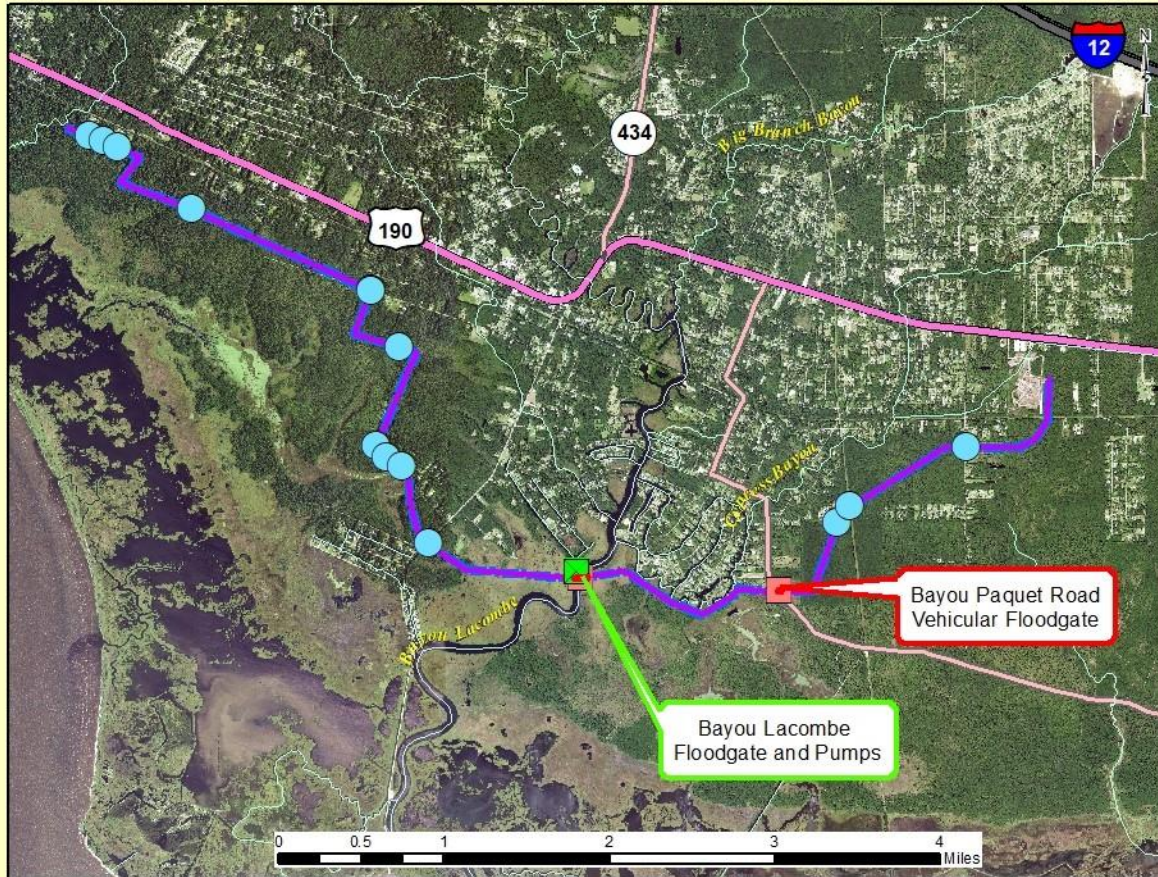
- Alt 4a - Lacombe Levee
- Alt 4a1 - Lacombe Levee Short
- Alt 4b - Lacombe Levee Combined with West Slidell Levee

Location Map



Date: 3/8/2021

St. Tammany Parish Feasibility Study: Alternative 4a - Lacombe Levee



U.S. Army Corps of Engineers
New Orleans District

Legend

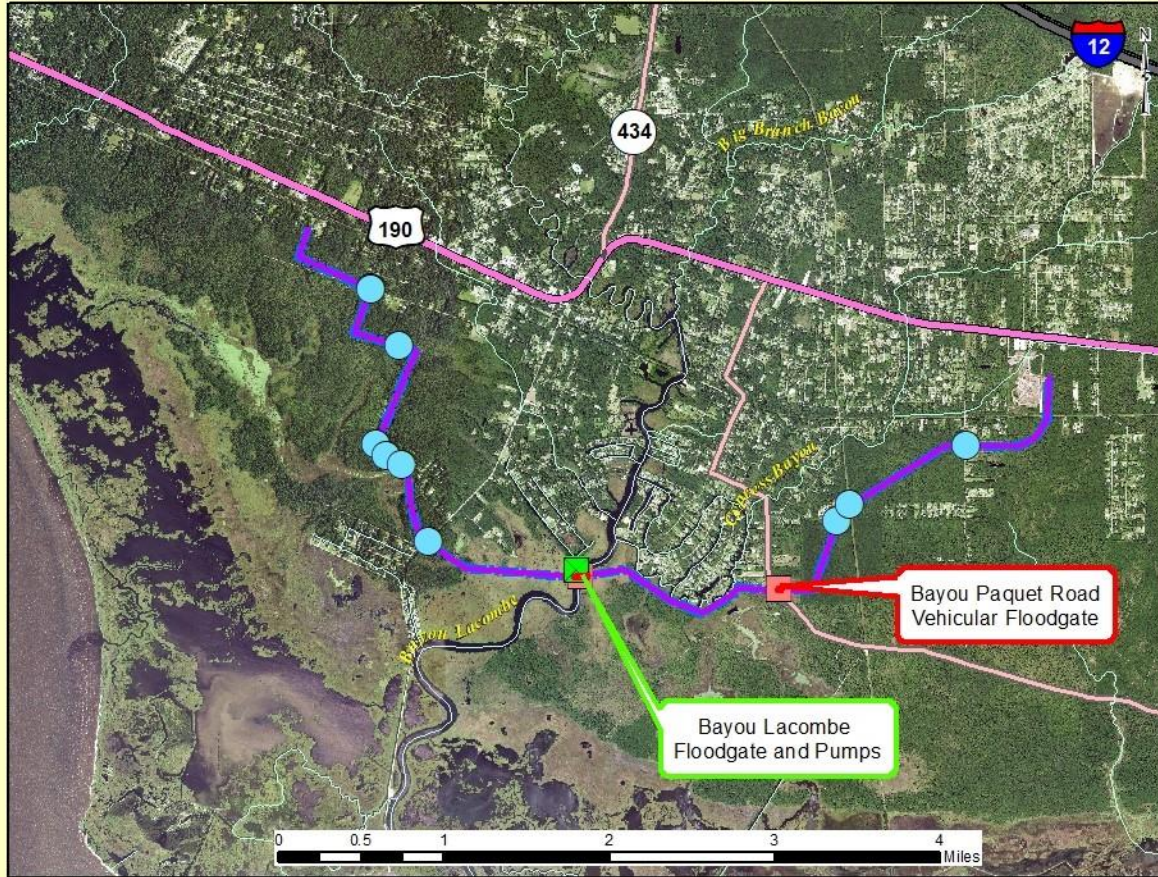
- Alt4a Floodwalls
- Alt4a Pump Stations
- Alt4a Control Structures
- Alt4a Road Ramps over Levee
- Lacombe Levee
- ▭ Lacombe Levee ROW Footprint
- Cities
- Parish Waterways

Location Map



Date: 3/8/2021

St. Tammany Parish Feasibility Study: Alternative 4a1 - Lacombe Levee Short



U.S. Army Corps of Engineers
New Orleans District

Legend

- Alt4a1 Floodwalls
- Alt4a1 Pump Stations
- Alt4a1 Control Structures
- Alt4a1 Road Ramps over Levee
- Lacombe Levee Short
- Lacombe Levee Short ROW Footprint
- Cities
- Parish Waterways


Location Map




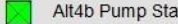
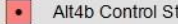
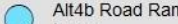
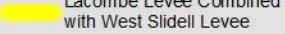
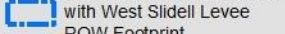
Date: 3/8/2021

St. Tammany Parish Study: Alternative 4b - Lacombe Levee Combined with West Slidell Levee





 U.S. Army Corps of Engineers
 New Orleans District

Legend

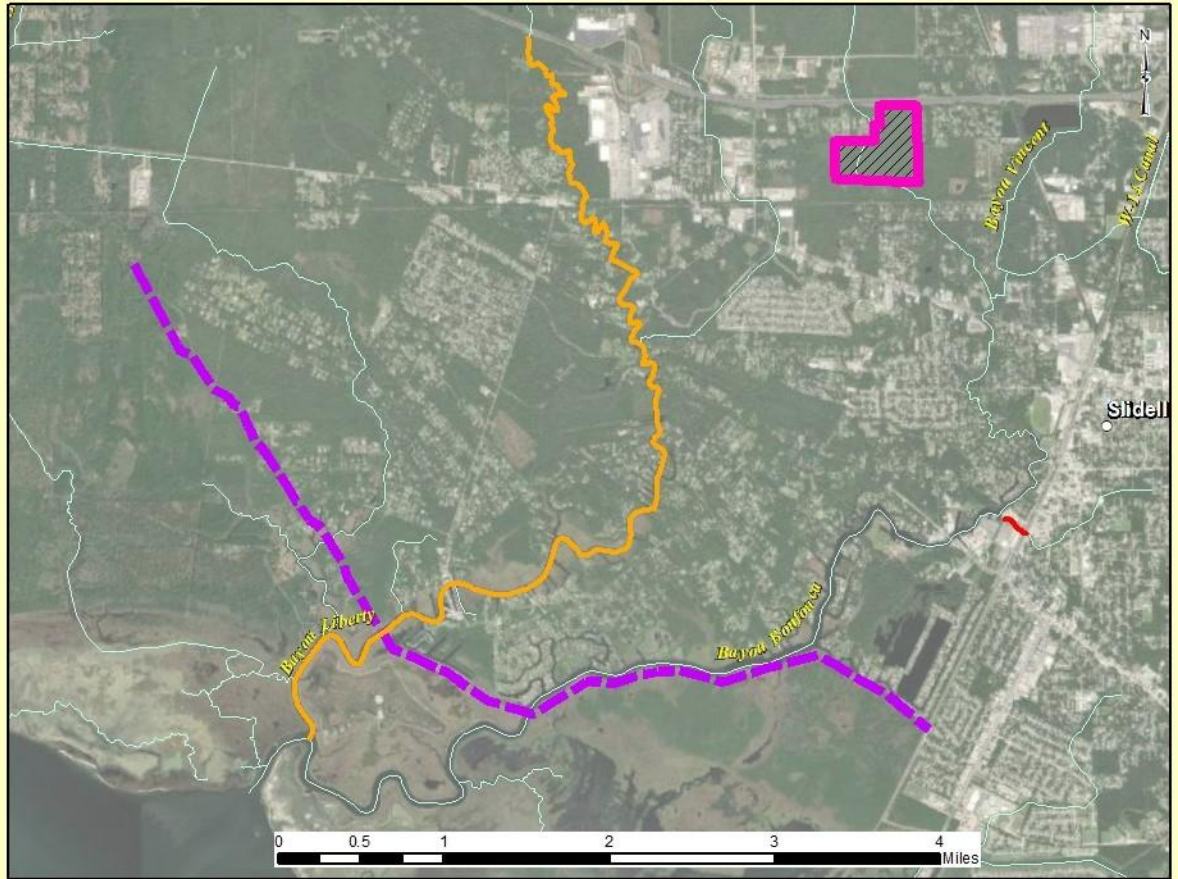
-  Alt4b Floodwalls
-  Alt4b Pump Stations
-  Alt4b Control Structures
-  Alt4b Road Ramps over Levee
-  Lacombe Levee Combined with West Slidell Levee
-  Lacombe Levee Combined with West Slidell Levee ROW Footprint

Location Map



Date: 3/8/2021

St. Tammany Feasibility Study: Bayou Liberty/ Bayou Vincent/ Bayou Bonfouca (Alternative 5)



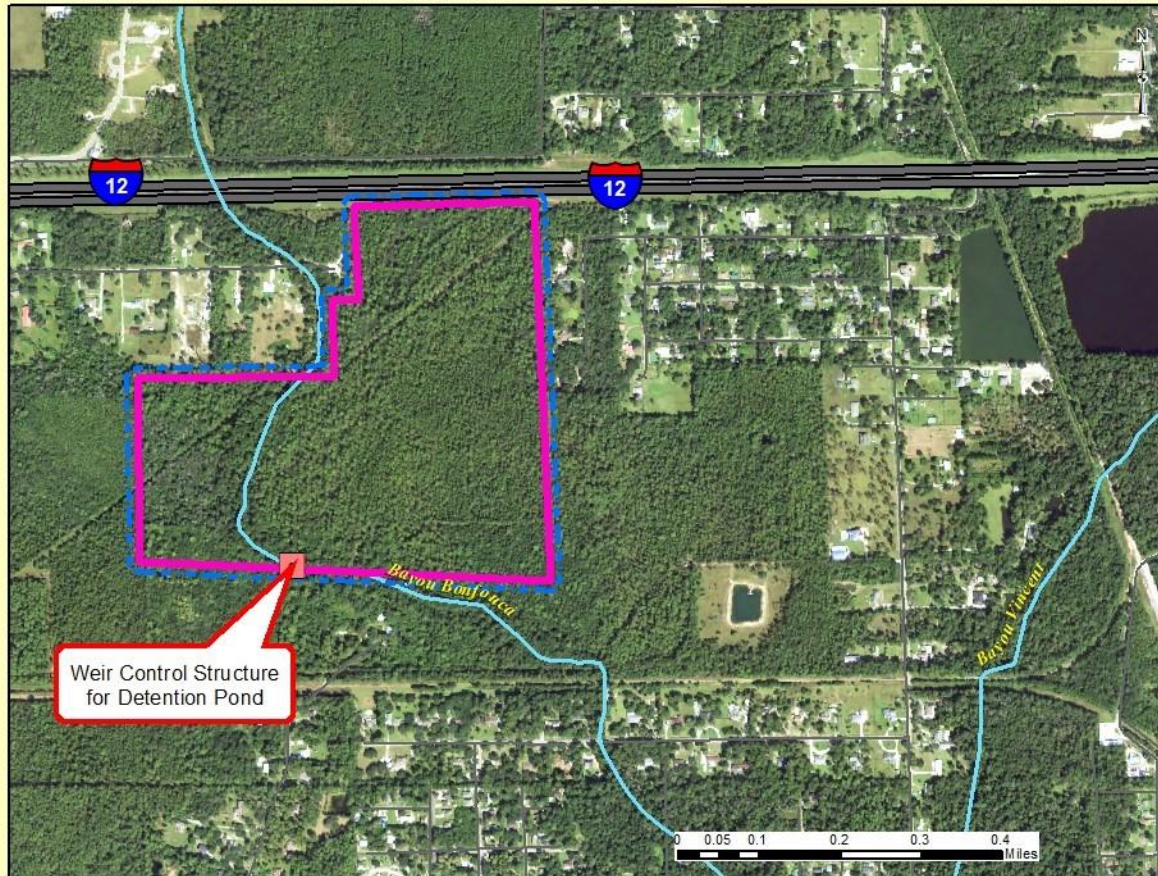
U.S. Army Corps of Engineers
New Orleans District

Legend

-  Bayou Bonfouca Detention Pond
-  Bayou Liberty Channel Improvements
-  West Slidell Levee
-  Bayou Patassat Channel Improvements





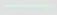


St. Tammany Parish Feasibility Study: Alternative 5 - Bayou Bonfouca Detention Pond

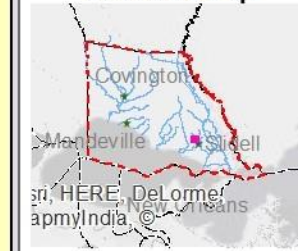


U.S. Army Corps of Engineers
New Orleans District

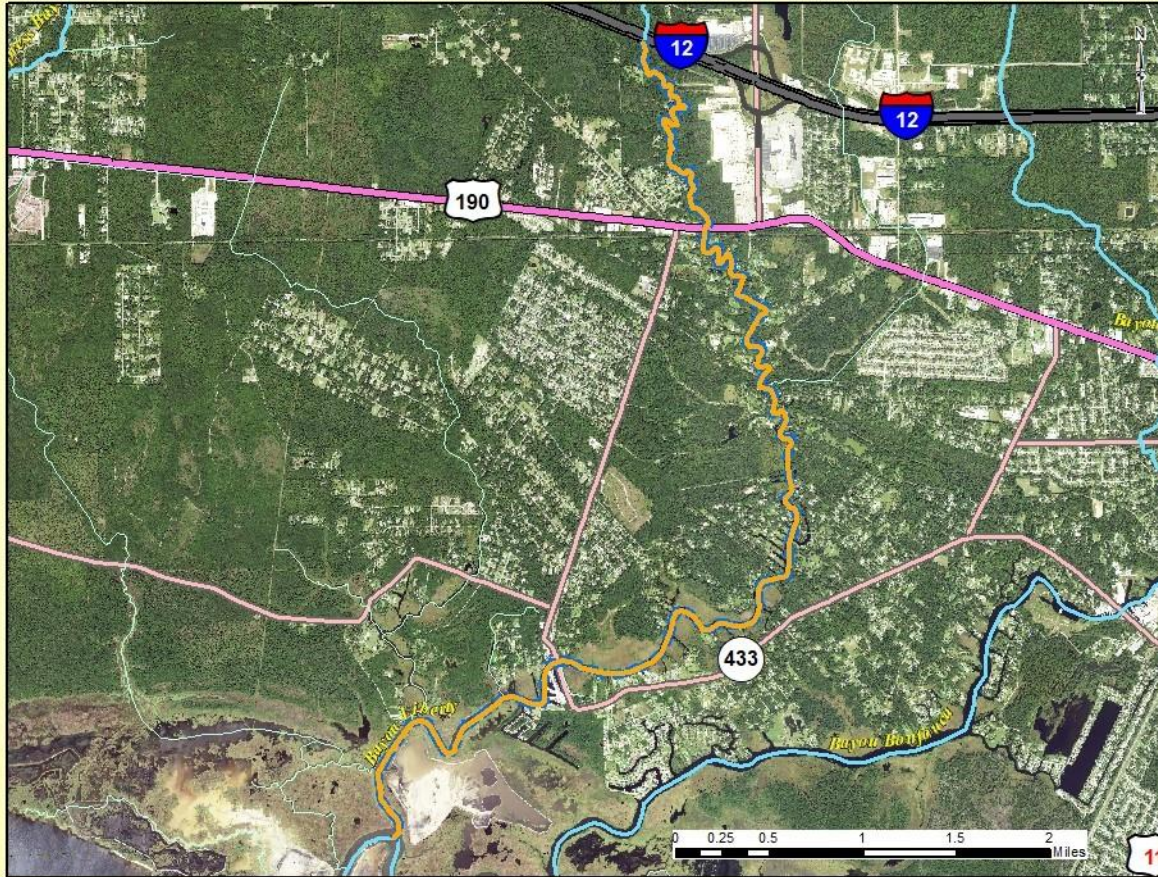
Legend

-  Bayou Bonfouca Detention Pond
-  Alt5 Floodgates
-  Bayou Bonfouca Detention Pond ROW Footprint
-  Cities
-  Parish Waterways

Location Map



St. Tammany Parish Feasibility Study: Alternative 5 - Bayou Liberty



U.S. Army Corps of Engineers
New Orleans District

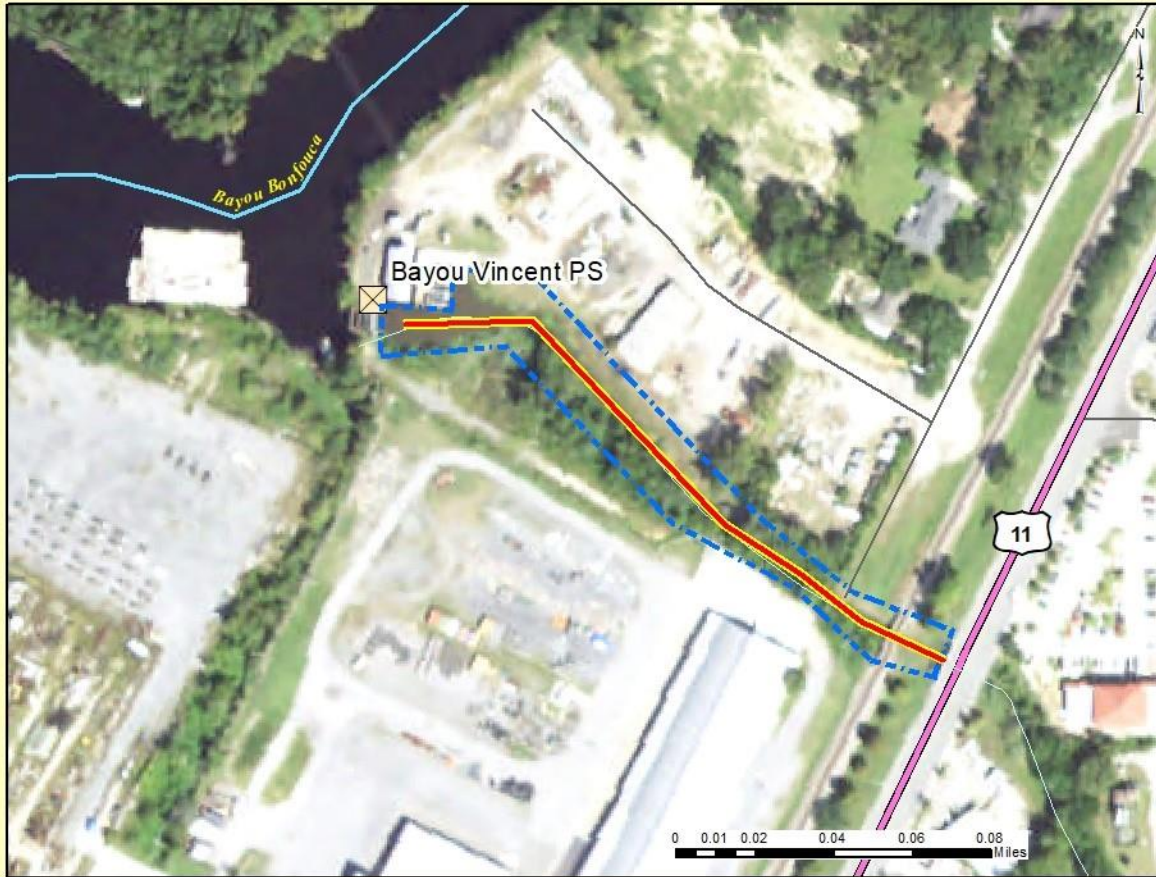
Legend


- Bayou Liberty Channel Improvement
- Bayou Liberty Channel Bottom
- Bayou Liberty ROW Footprint
- Cities
- Parish Waterways

Location Map



St. Tammany Parish Feasibility Study: Alternative 5 - Bayou Patassat





U.S. Army Corps of Engineers
New Orleans District

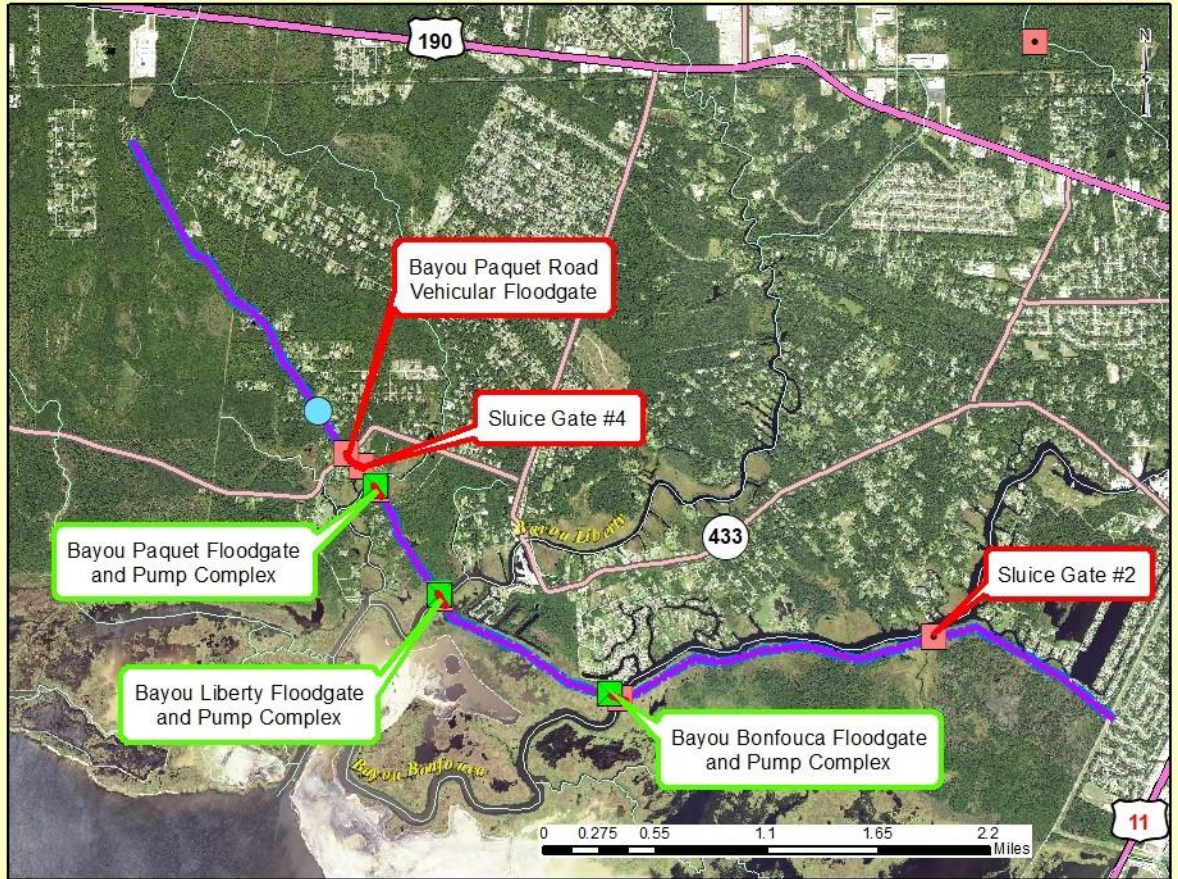
Legend


- Bayou Patassat Channel Improvement
- Bayou Patassat Channel Bottom
- Bayou Patassat ROW Footprint
- Pump Station (Active)
- Pump Station (Proposed)
- Cities
- Parish Waterways

Location Map



St. Tammany Parish Feasibility Study: Alternative 5 - West Slidell Levee





 U.S. Army Corps of Engineers
 New Orleans District

Legend

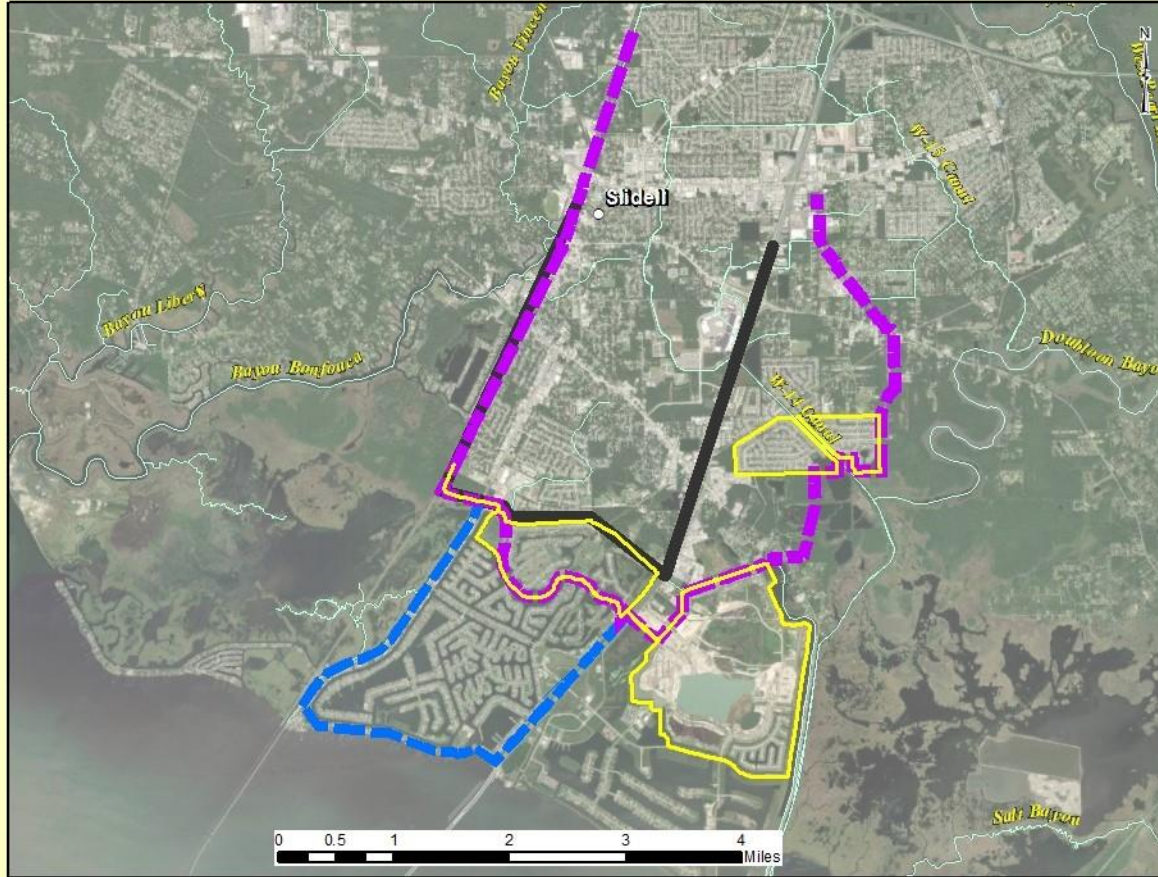
- Alt5 Floodwalls
- Alt5 Pump Stations
- Alt5 Control Structures
- Alt5 Road Ramps over Levee
- West Slidell Levee
- West Slidell Levee ROW Footprint
- Cities
- Parish Waterways

Location Map



Date: 3/8/2021

St. Tammany Feasibility Study: South Slidell Storm Surge (Alternative 6)



U.S. Army Corps of Engineers
New Orleans District

Alternatives

- Slidell Levee
- Eden Isles Levee

Existing Alignments

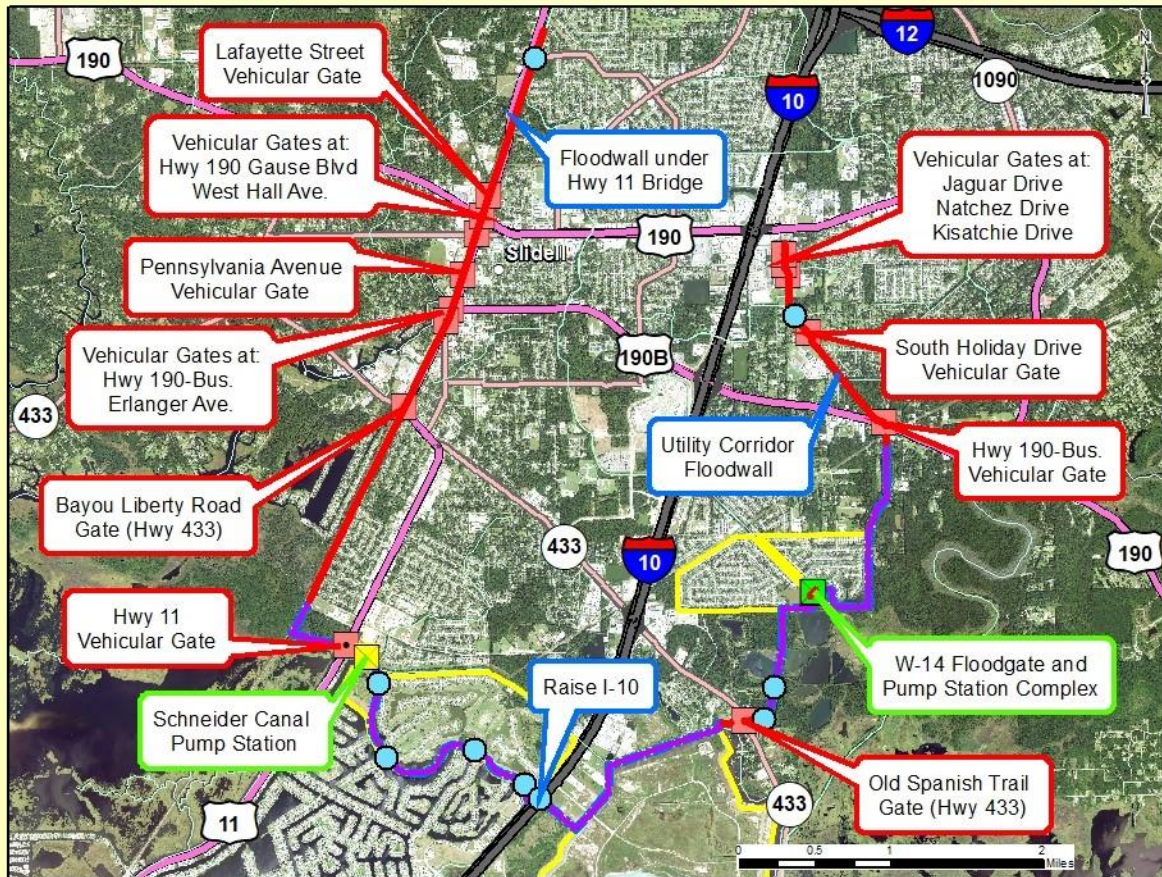
- Slidell Levees
- Authorized SELA Schneider Canal

Location Map



Date: 3/8/2021

St. Tammany Parish Feasibility Study: Alternative 6a - Slidell Levee





U.S. Army Corps of Engineers
New Orleans District

Legend

- Alt6a Road Ramps
- Alt6a Floodwalls
- New Pump Station
- Existing Pump Station
- Alt6a Floodgates
- Slidell Levee Alignment
- Slidell Levee ROW Footprint
- Existing Slidell Levees
- Parish Waterways


Location Map



Date: 3/8/2021

St. Tammany Parish Feasibility Study: Alternative 6b - Eden Isles Levee






U.S. Army Corps of Engineers
New Orleans District

Legend

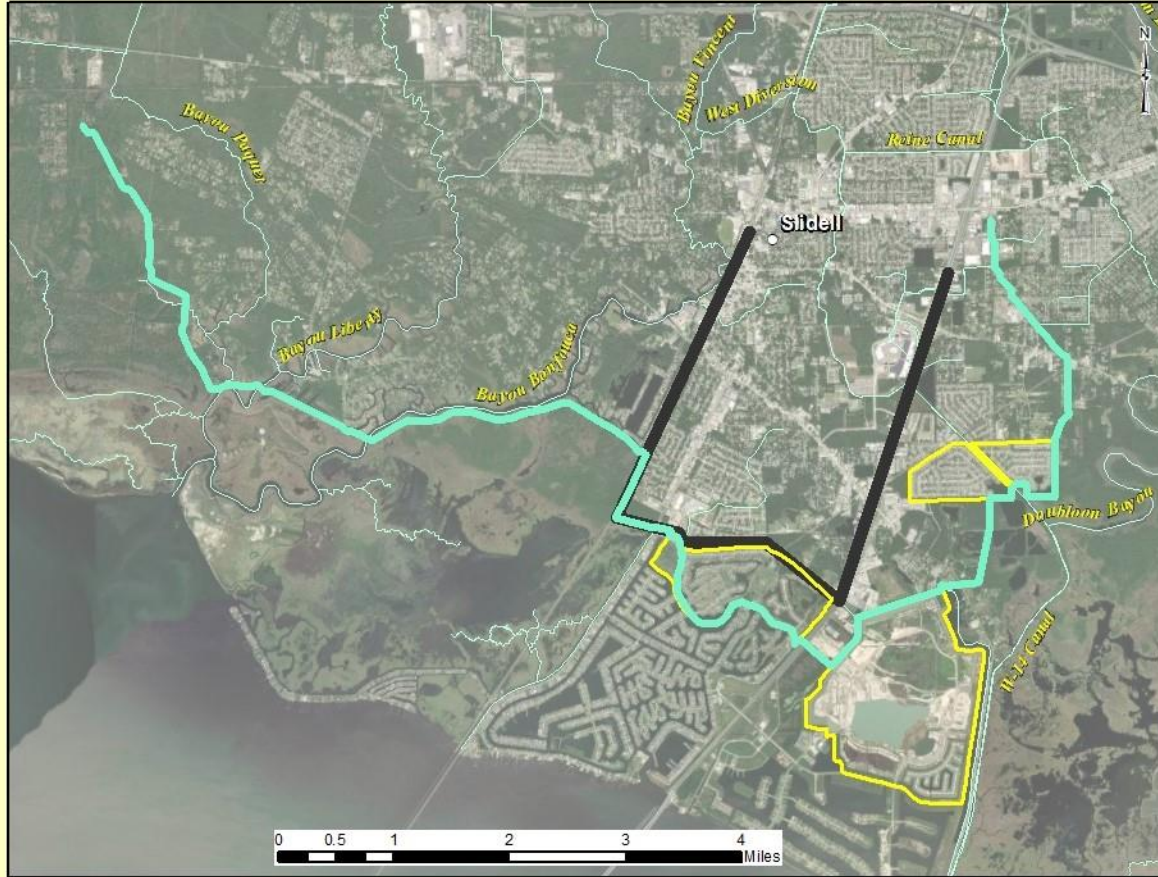
- Alt6b Floodwalls
- Alt6b Floodgates
- Alt6b Staging Areas
- Eden Isles Levee
- Eden Isles Levee ROW Footprint
- Existing Slidell Levees
- Cities
- Parish Waterways

Location Map



Date: 3/8/2021

St. Tammany Feasibility Study: South and West Slidell Combined Levee (Alternative 6c)



U.S. Army Corps of Engineers
New Orleans District

Alternatives

South and West
Slidell Combined
Levee

Existing Alignments

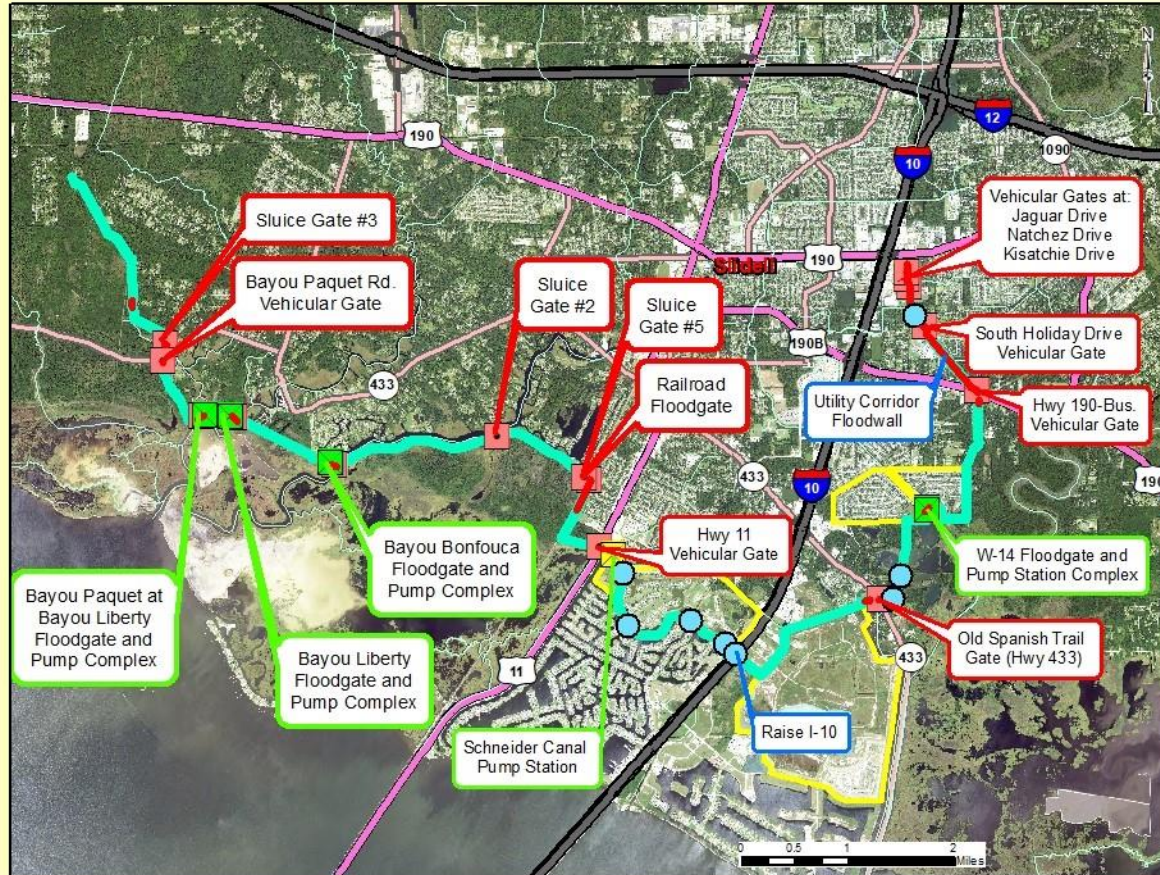
Slidell Levees
Authorized SELA
Schneider Canal


Location Map



Date: 12/15/2020


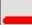


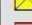

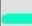
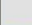
St. Tammany Parish Study: Alternative 6c - South and West Slidell Combined Levee






U.S. Army Corps of Engineers
New Orleans District

Legend

-  Alt6c Road Ramps
-  Alt6c Floodwalls
-  New Pump Station
-  Existing Pump Station
-  Alt6c Floodgates
-  South and West Slidell Combined Levee
-  South and West Slidell Combined Levee ROW Footprint
-  Existing Slidell Levees

Location Map



Date: 12/11/2020

St. Tammany Feasibility Study: Eastern Slidell (Alternative 7)



U.S. Army Corps of Engineers
New Orleans District

Legend

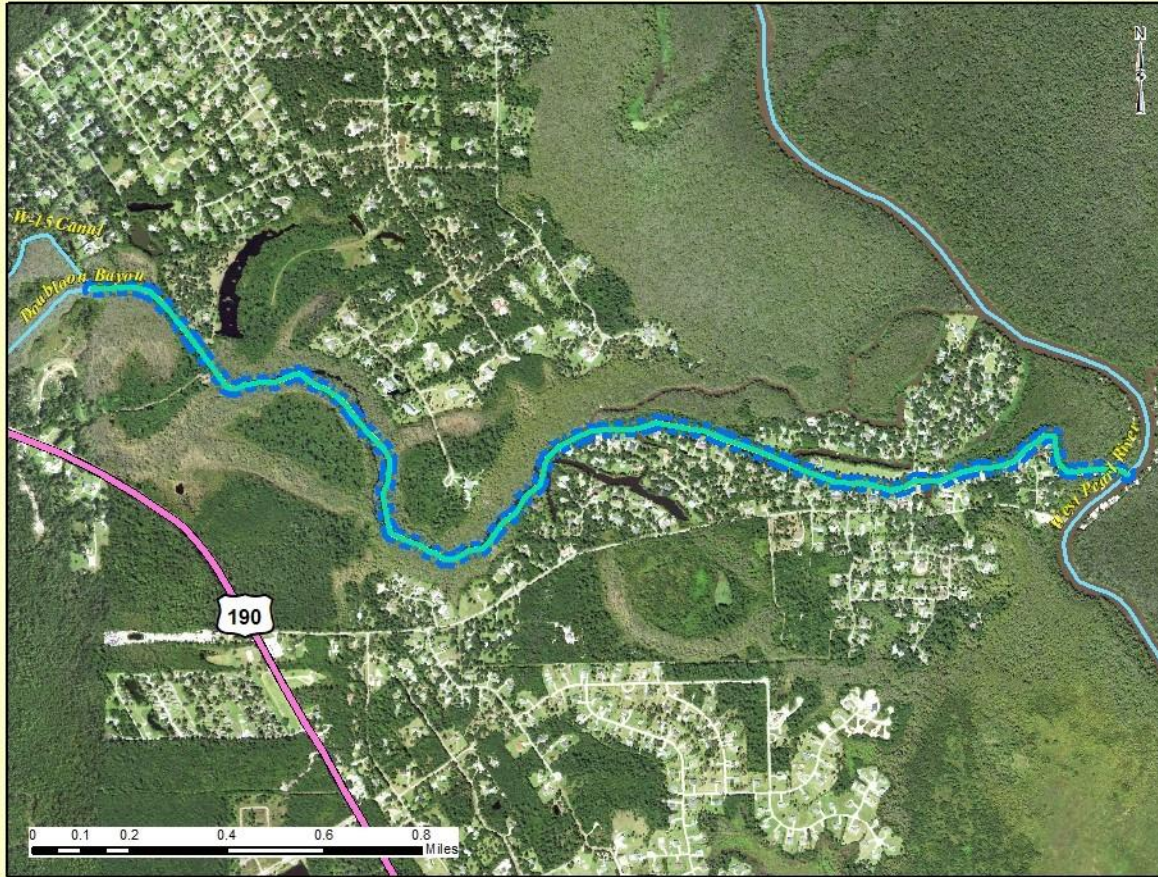
- Pearl River Levee
- Doublon Bayou Channel Improvements
- Gum Bayou Diversion
- Poor Boy Canal Channel Improvements

Location Map



Date: 9/21/2020

St. Tammany Parish Feasibility Study: Alternative 7 - Doubloon Bayou



U.S. Army Corps of Engineers
New Orleans District

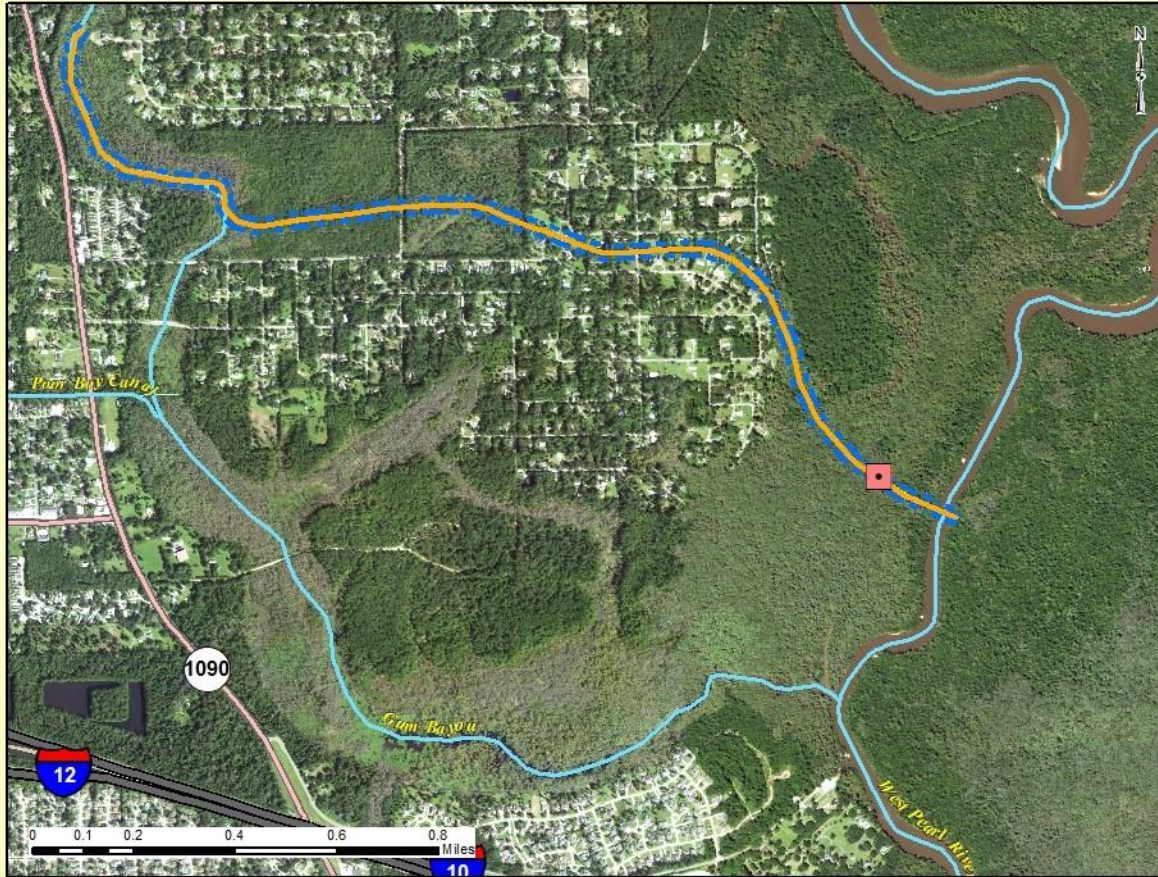
Legend

- Doubloon Bayou Channel Improvement
- Doubloon Bayou Channel Bottom
- Doubloon Bayou ROW Footprint
- Cities
- Parish Waterways

Location Map



St. Tammany Parish Feasibility Study: Alternative 7 - Gum Bayou Diversion



U.S. Army Corps of Engineers
New Orleans District

Legend

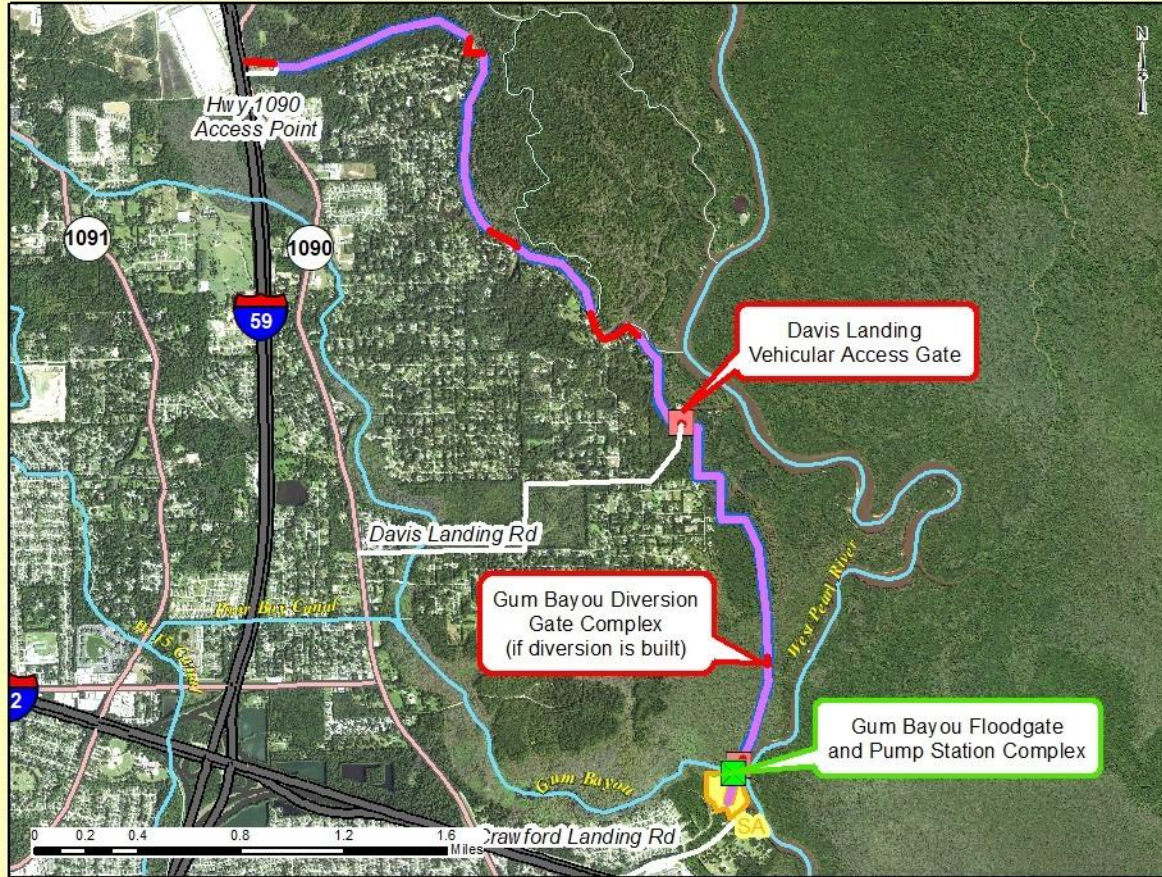
- Gum Bayou Diversion
- Alt7 Floodgates
- Gum Bayou Diversion Channel Bottom
- Gum Bayou Diversion ROW Footprint
- Cities
- Parish Waterways


Location Map



Date: 12/11/2020

St. Tammany Parish Feasibility Study: Alternative 7 - Pearl River Levee





 U.S. Army Corps of Engineers
 New Orleans District

Legend

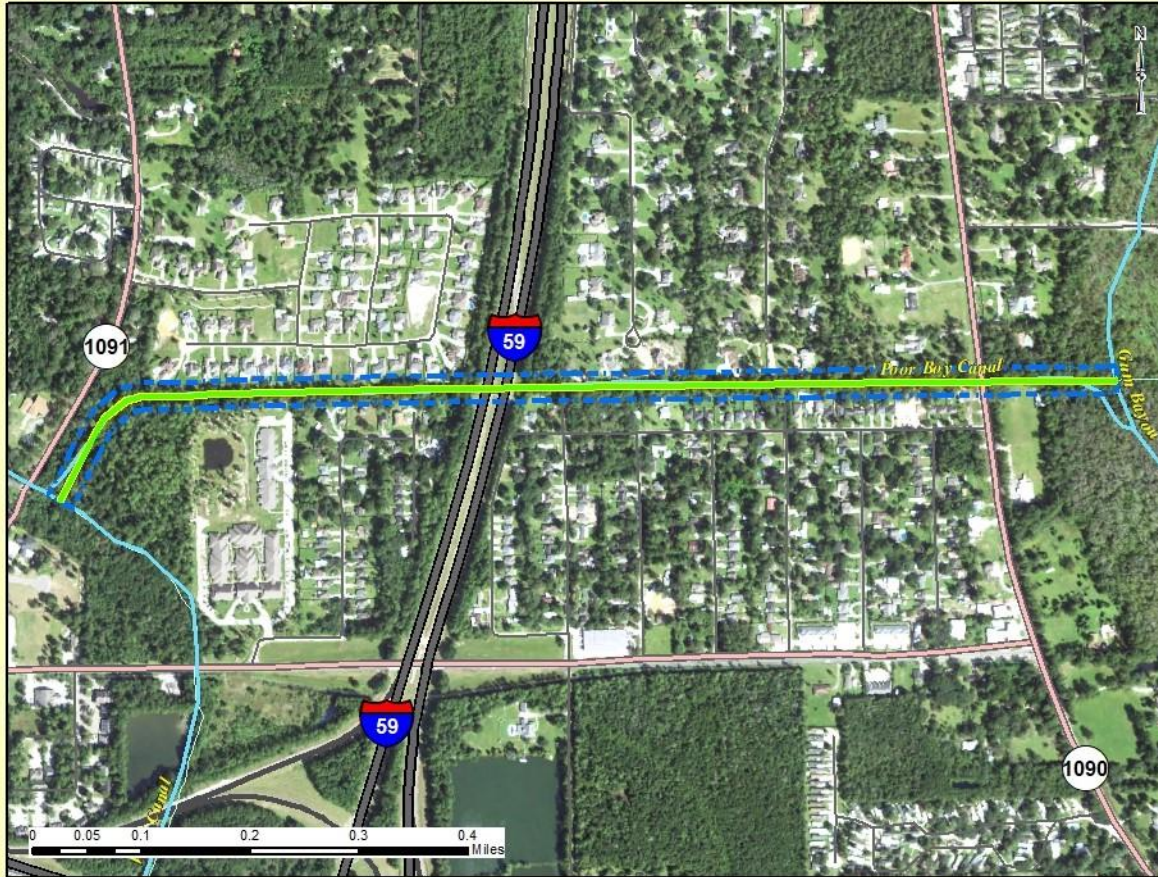
- Alt7 Access Roads
- Alt7 Pump Stations
- Alt7 Floodwalls
- Alt7 Floodgates
- Pearl River Levee
- Alt7 Staging Areas
- Alt7 Pearl River Footprint
- Cities
- Parish Waterways

Location Map



Date: 12/11/2020

St. Tammany Parish Feasibility Study: Alternative 7 - Poor Boy Canal



U.S. Army Corps of Engineers
New Orleans District

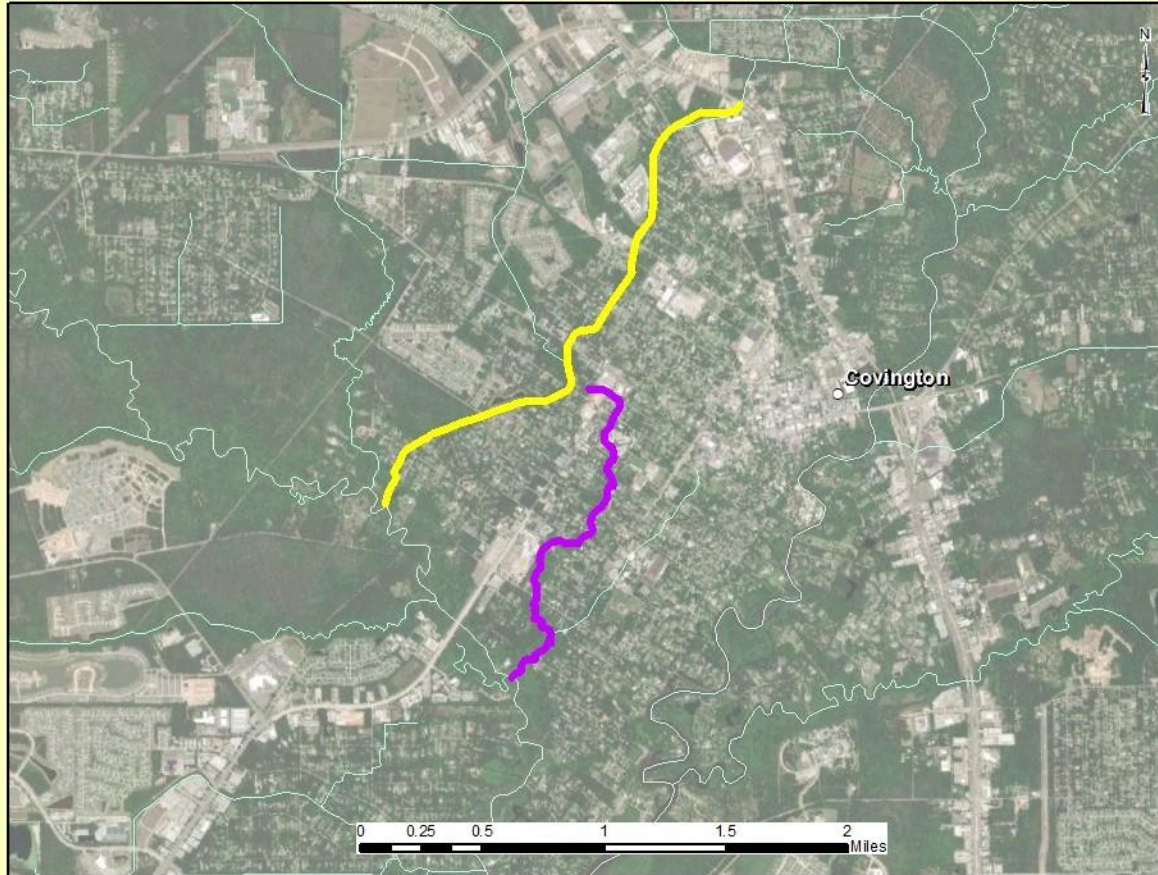
Legend

- Poor Boy Canal
- Poor Boy Canal Channel Bottom
- Poor Boy Canal ROW Footprint
- Cities
- Parish Waterways

Location Map



St. Tammany Feasibility Study: Upper Tchefuncte/ Covington (Alternative 8)



U.S. Army Corps of Engineers
New Orleans District

Legend

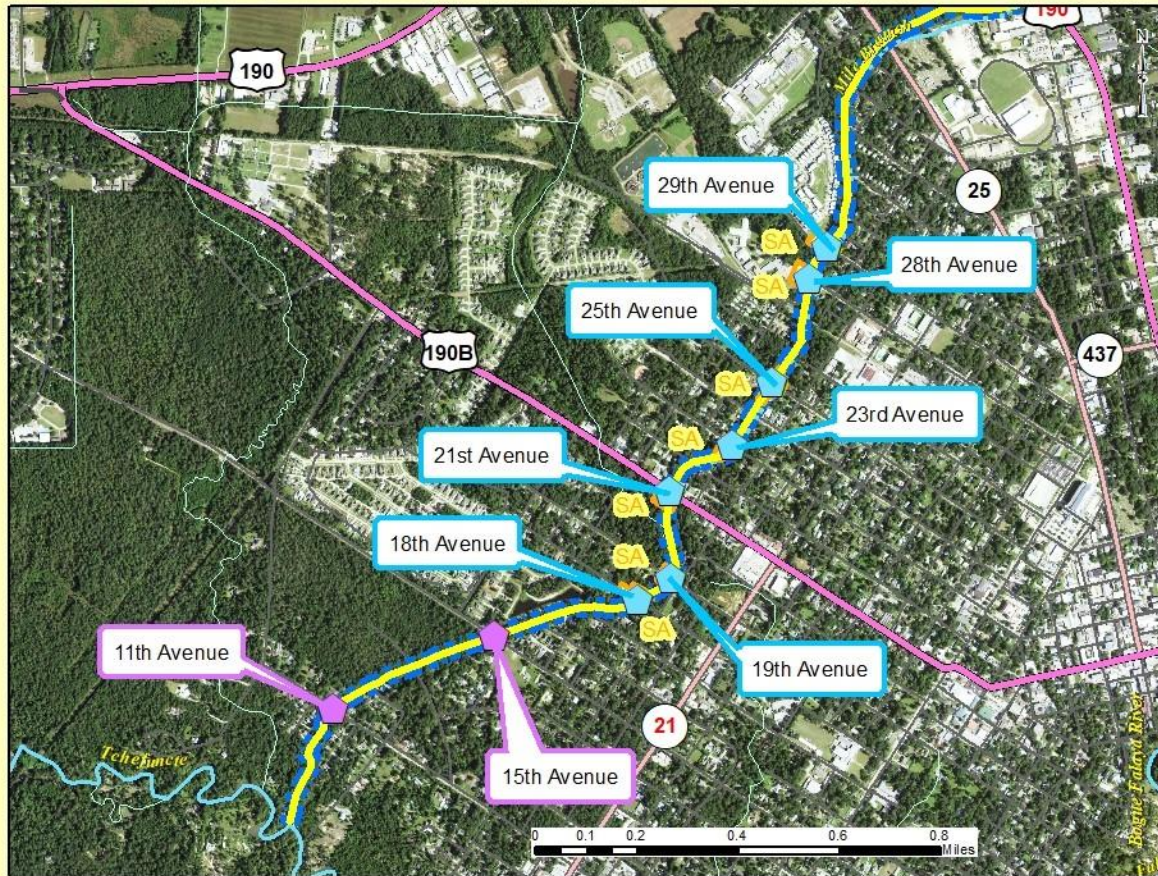
- Mile Branch Channel Improvements
- Mile Branch Lateral A Channel Improvements

Location Map










Date: 3/8/2021

St. Tammany Parish Feasibility Study: Alternative 8 - Mile Branch Channel Improvements



U.S. Army Corps of Engineers
New Orleans District

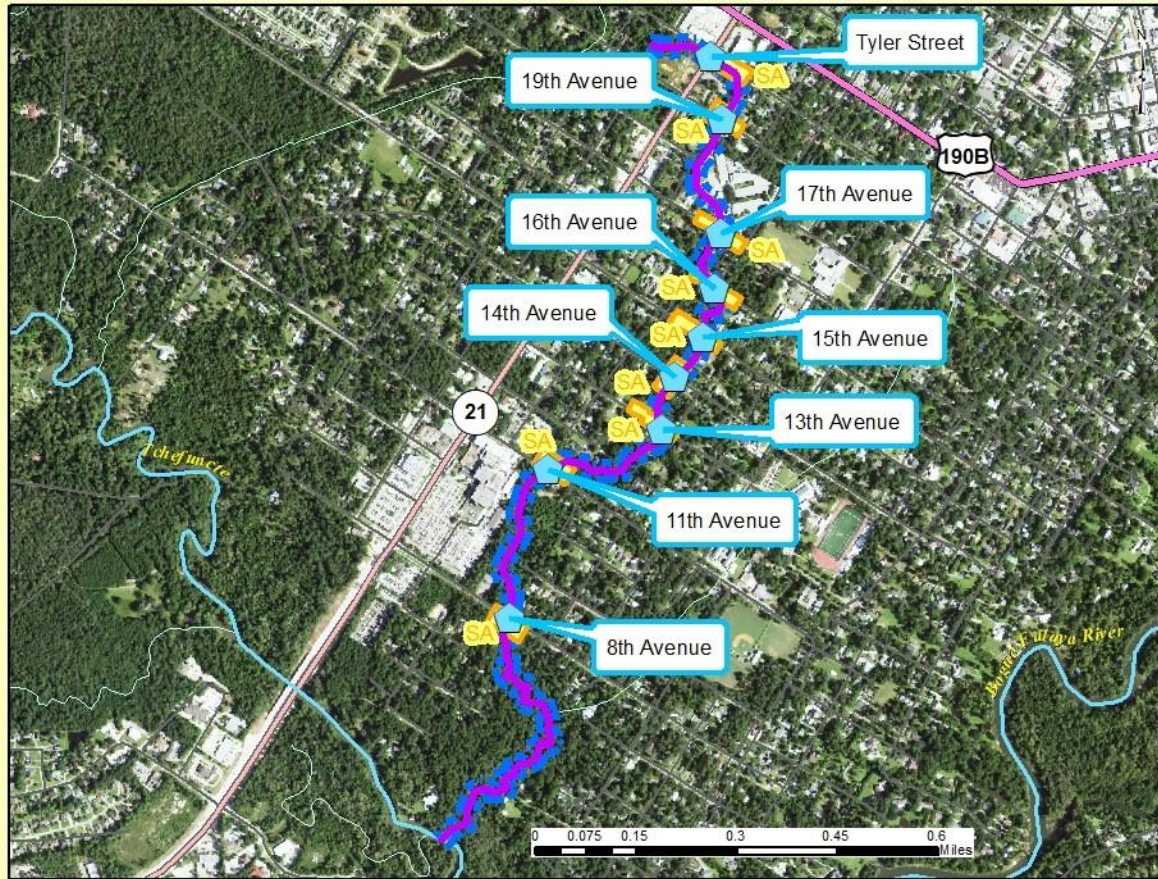
Legend


-  Alt8 Culvert or Bridge Replacement Required
-  Alt8 Culvert or Bridge Replacement Completed
-  Mile Branch Channel Improvements
-  Alt8 Staging Areas
-  Mile Branch Channel Improvements ROW Footprint
-  Cities
-  Parish Waterways

Location Map










St. Tammany Parish Feasibility Study: Alternative 8 - Mile Branch Lateral A Channel Improvements





 U.S. Army Corps of Engineers
 New Orleans District

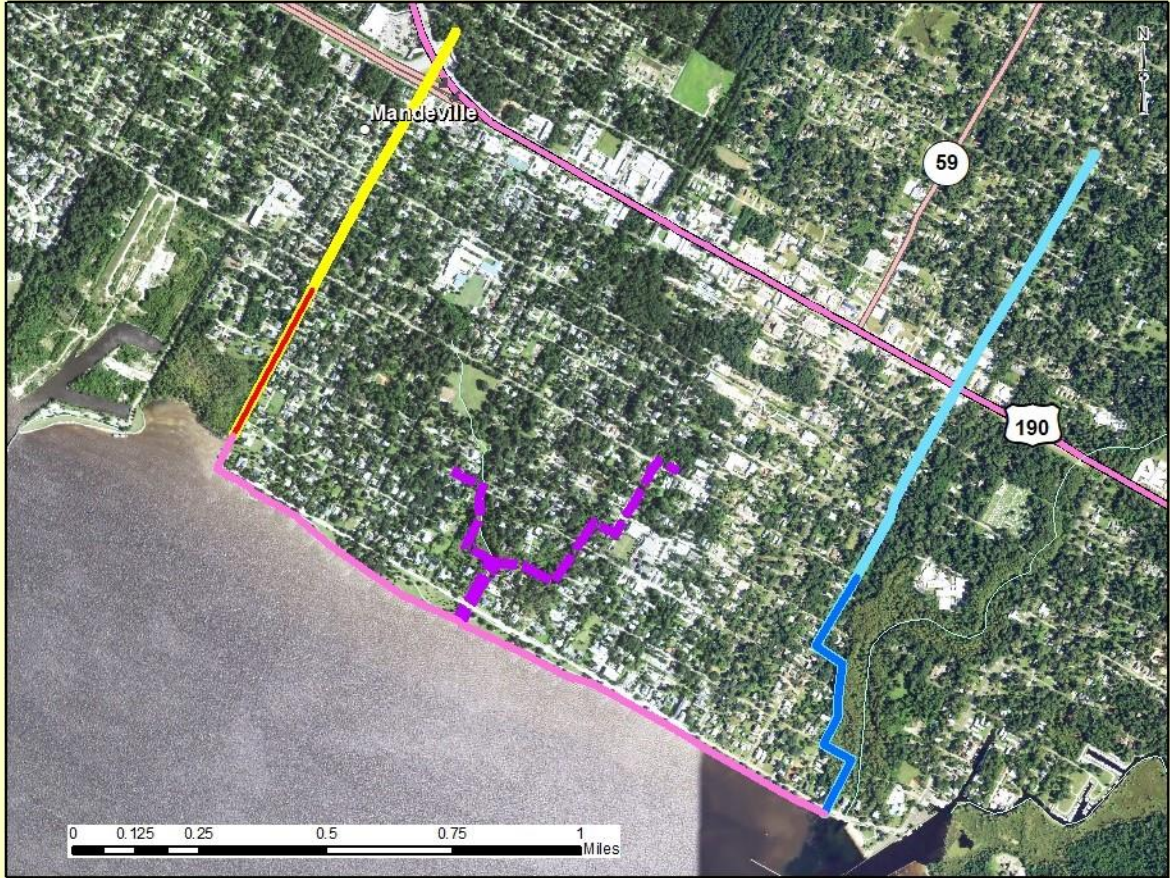
Legend

-  Alt8 Culvert or Bridge Replacement Required
-  Alt8 Culvert or Bridge Replacement Completed
-  Mile Branch Lateral A Channel Improvements
-  Alt8 Staging Areas
-  Mile Branch Lateral A ROW Channel Improvements Footprint
-  Cities
-  Parish Waterways

Location Map



St. Tammany Feasibility Study: Mandeville Lakefront (Alternative 9)



U.S. Army Corps of Engineers
New Orleans District

Legend

- Mandeville Seawall Replacement
- Galvez Canal Floodwall 7.3 ft
- Galvez Canal Floodwall 18.0 ft
- Revine aux Coquilles Barrier (Alt 9a only)
- Little Bayou Castine 7.3 ft
- Little Bayou Castine 18.0 ft

Location Map



Date: 10/15/2020

St. Tammany Parish Feasibility Study: Alternative 9a - Galvez Canal Floodwall (Passive)



U.S. Army Corps of Engineers
New Orleans District

Legend

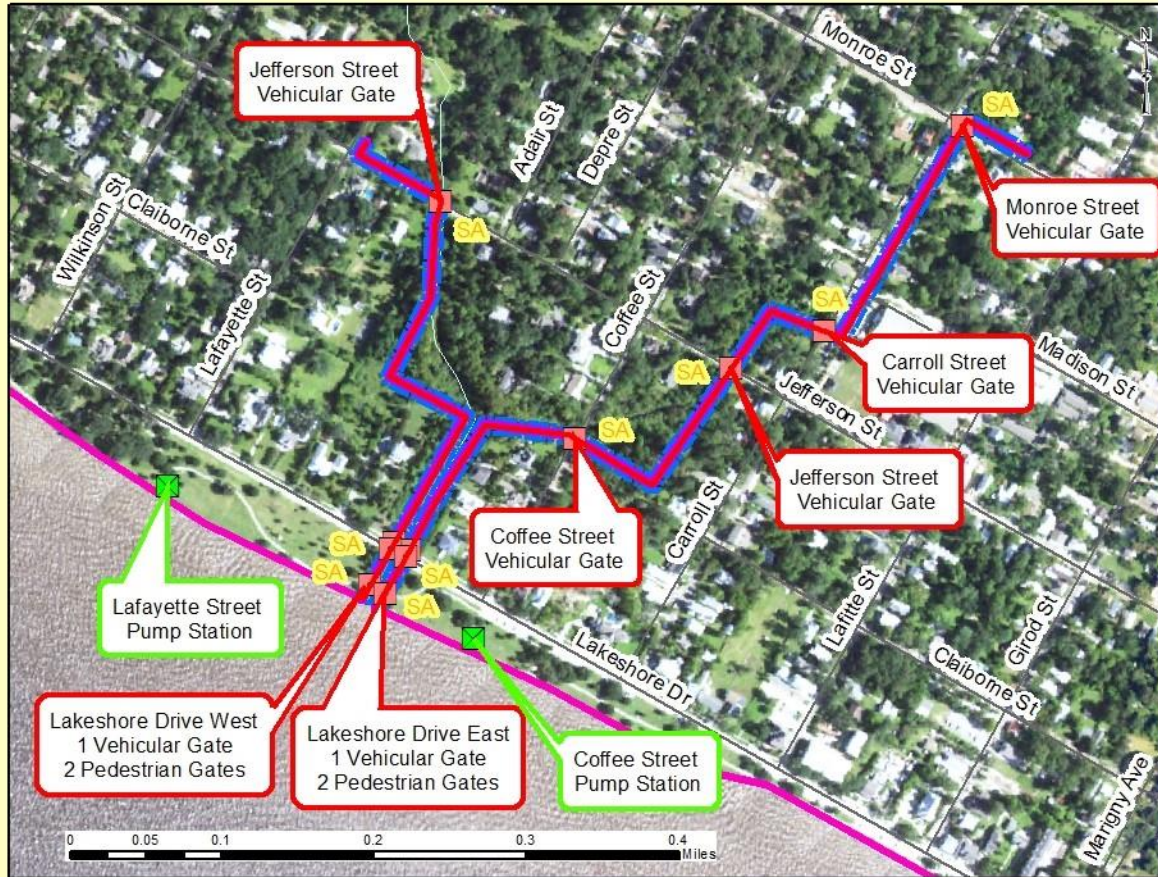
- Alt9a Pump Stations
- Alt9a Floodgates
- Alt9a Floodwalls
- Alt9a Staging Areas
- Galvez Canal Seawall
- Ravine au Coquilles Passive Barrier
- Mandeville Seawall Replacement 9a
- Galvez Canal Floodwall ROW Footprint

Location Map



Date: 10/28/2020

St. Tammany Parish Feasibility Study: Alternative 9a - Revine Aux Coquilles (Passive)



U.S. Army Corps of Engineers
New Orleans District

Legend

- Alt9a Pump Stations
- Alt9a Floodgates
- Alt9a Floodwalls
- Alt9a Staging Areas
- Ravine au Coquilles Passive Barrier
- Ravine au Coquilles ROW Footprint
- Mandeville Seawall Replacement 9a

Location Map



Date: 10/2/2020

St. Tammany Parish Feasibility Study: Alternative 9a - Little Bayou Castine (Passive)



U.S. Army Corps of Engineers
New Orleans District

Legend

- Alt9a Floodgates
- Alt9a Floodwalls
- Alt9a Staging Areas
- Little Bayou Castine Passive Barrier
- Little Bayou Castine ROW Footprint
- Mandeville Seawall Replacement 9a

Location Map



Date: 10/2/2020

St. Tammany Parish Feasibility Study: Alternative 9a - Mandeville Sea Wall (Passive)



U.S. Army Corps of Engineers
New Orleans District

Legend

- Alt9a Pump Stations
- Alt9a Floodgates
- Alt9a Floodwalls
- Mandeville Seawall Replacement 9a
- Galvez Canal Seawall
- Ravine au Coquilles Passive Barrier
- Little Bayou Castine Passive Barrier
- Mandeville Seawall ROW Footprint

Location Map








Date: 10/28/2020

St. Tammany Parish Feasibility Study: Alternative 9b - Galvez Canal Floodwall (Forced Drainage)



U.S. Army Corps of Engineers
New Orleans District

Legend

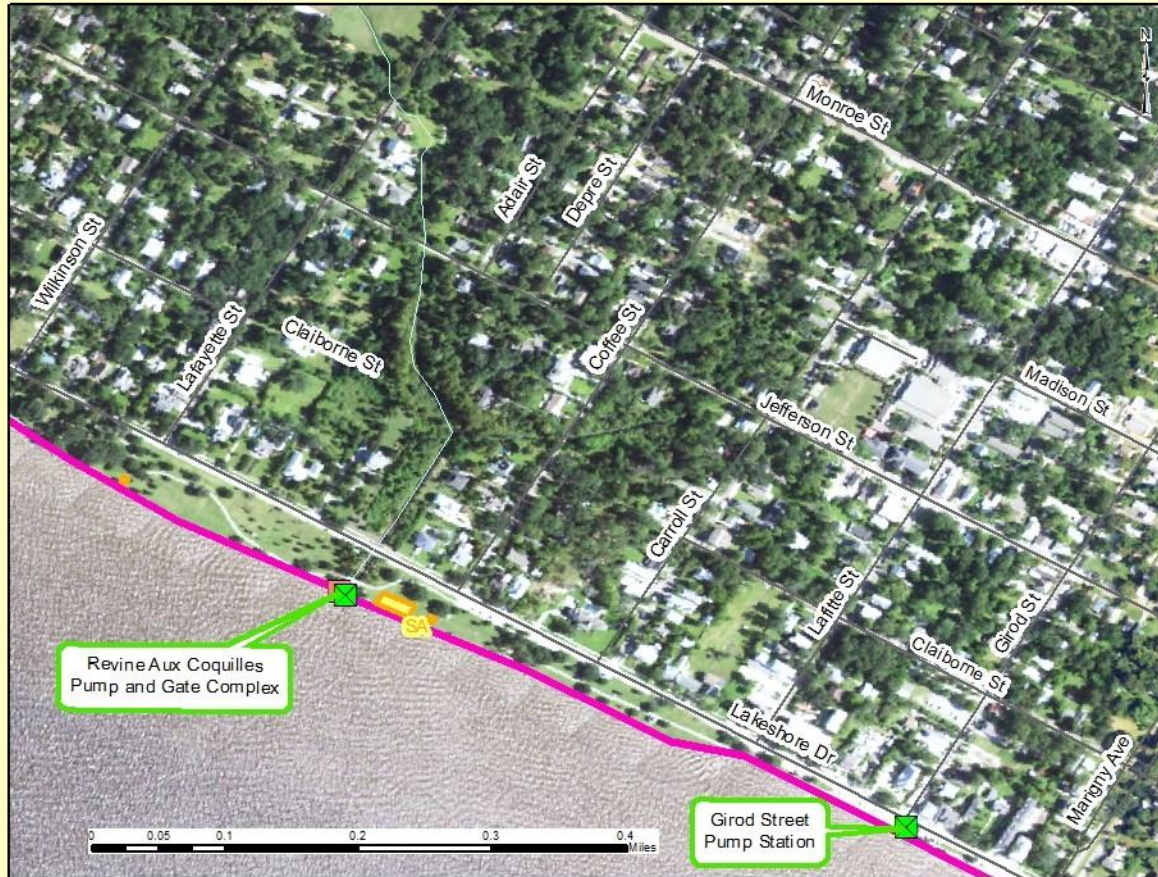
-  Alt9b Pump Stations
-  Alt9b Floodgates
-  Alt9b Floodwalls
-  Alt9b Staging Areas
-  Galvez Canal Seawall
-  Mandeville Seawall Replacement 9b
-  Galvez Canal Floodwall ROW Footprint

Location Map



Date: 10/28/2020

St. Tammany Parish Feasibility Study: Alternative 9b - Revine Aux Coquilles (Forced Drainage)



U.S. Army Corps of Engineers
New Orleans District

Legend

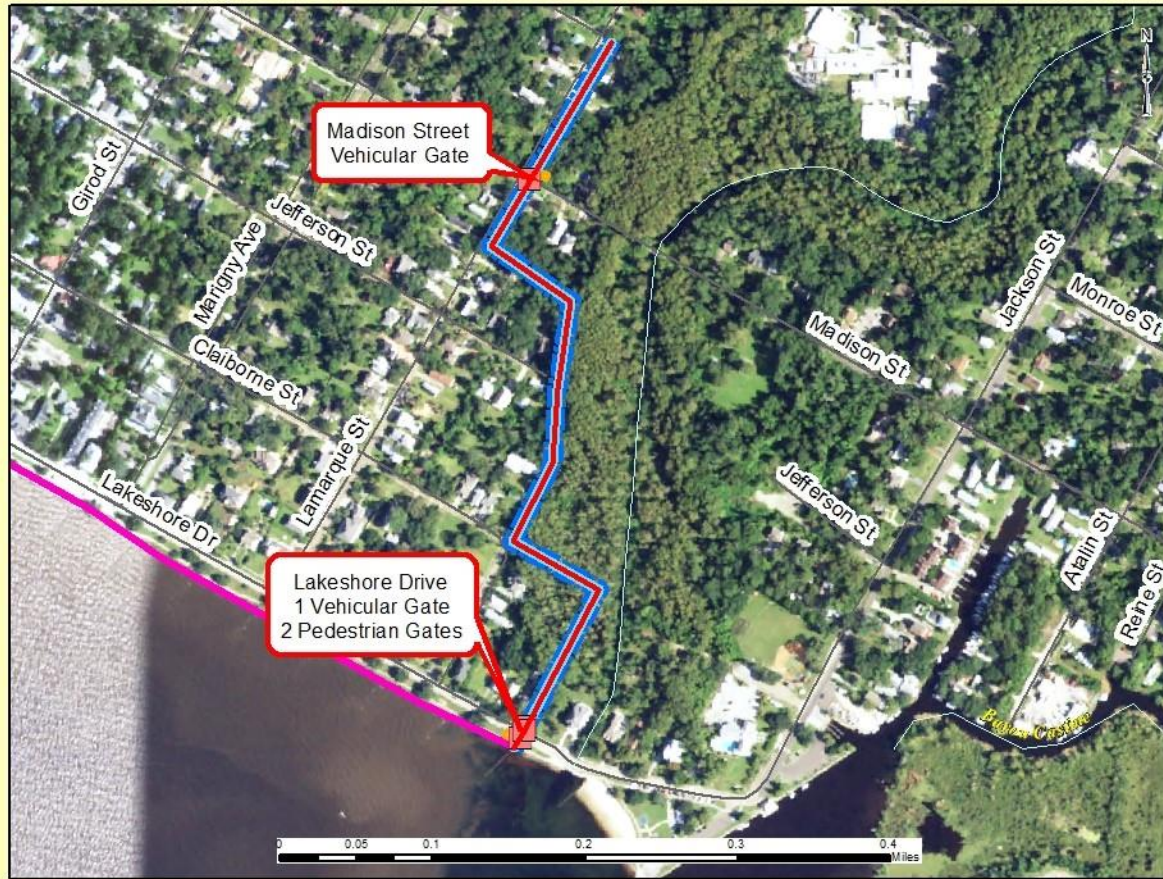
- Alt9b Pump Stations
- Alt9b Floodgates
- Alt9b Floodwalls
- Alt9b Staging Areas
- Mandeville Seawall Replacement 9b

Location Map



Date: 10/15/2020

St. Tammany Parish Feasibility Study: Alternative 9b - Little Bayou Castine (Forced Drainage)



U.S. Army Corps of Engineers
New Orleans District

Legend

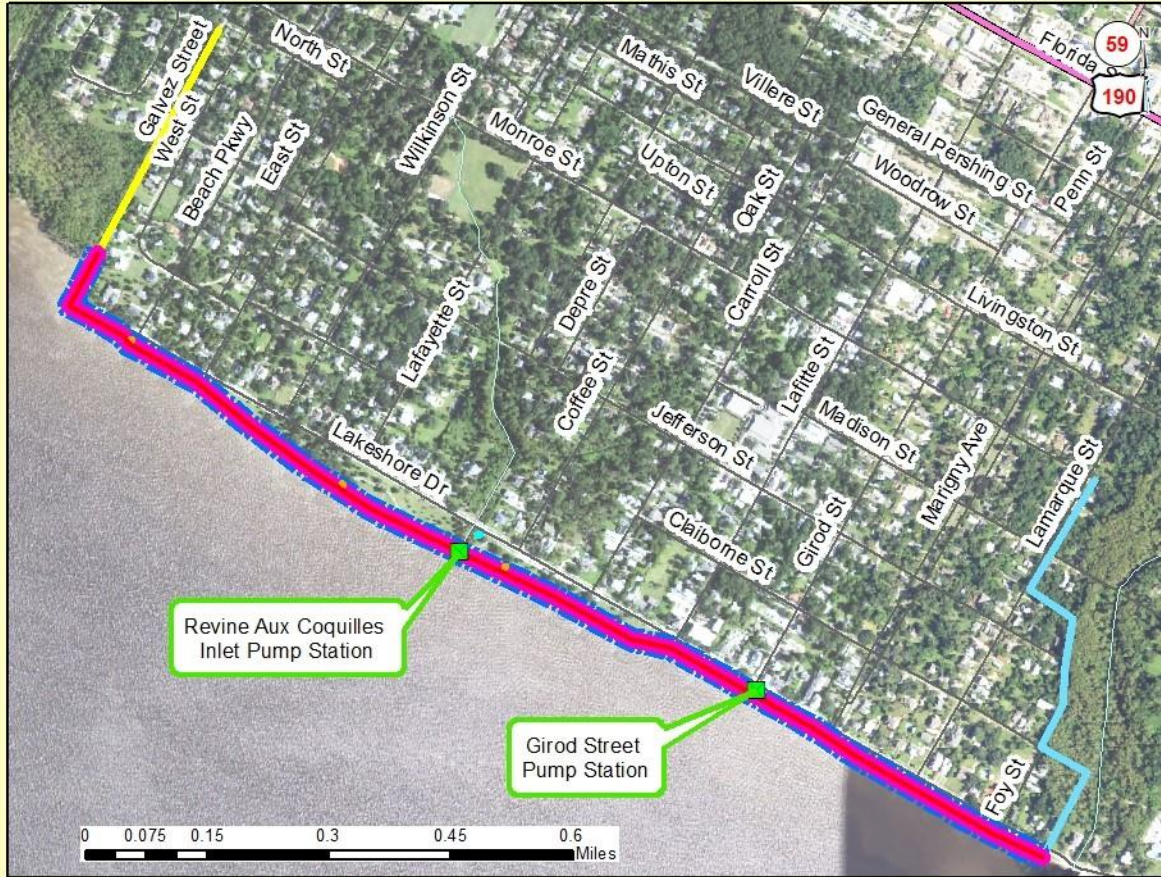
- Alt9b Floodgates
- Alt9b Floodwalls
- Alt9 Staging Areas
- Little Bayou Castine Passive Barrier
- Mandeville Seawall Replacement 9b
- Little Bayou Castine ROW Footprint

Location Map



Date: 10/2/2020

St. Tammany Parish Feasibility Study: Alternative 9b - Mandeville Sea Wall (Forced Drainage)



U.S. Army Corps of Engineers
New Orleans District

Legend

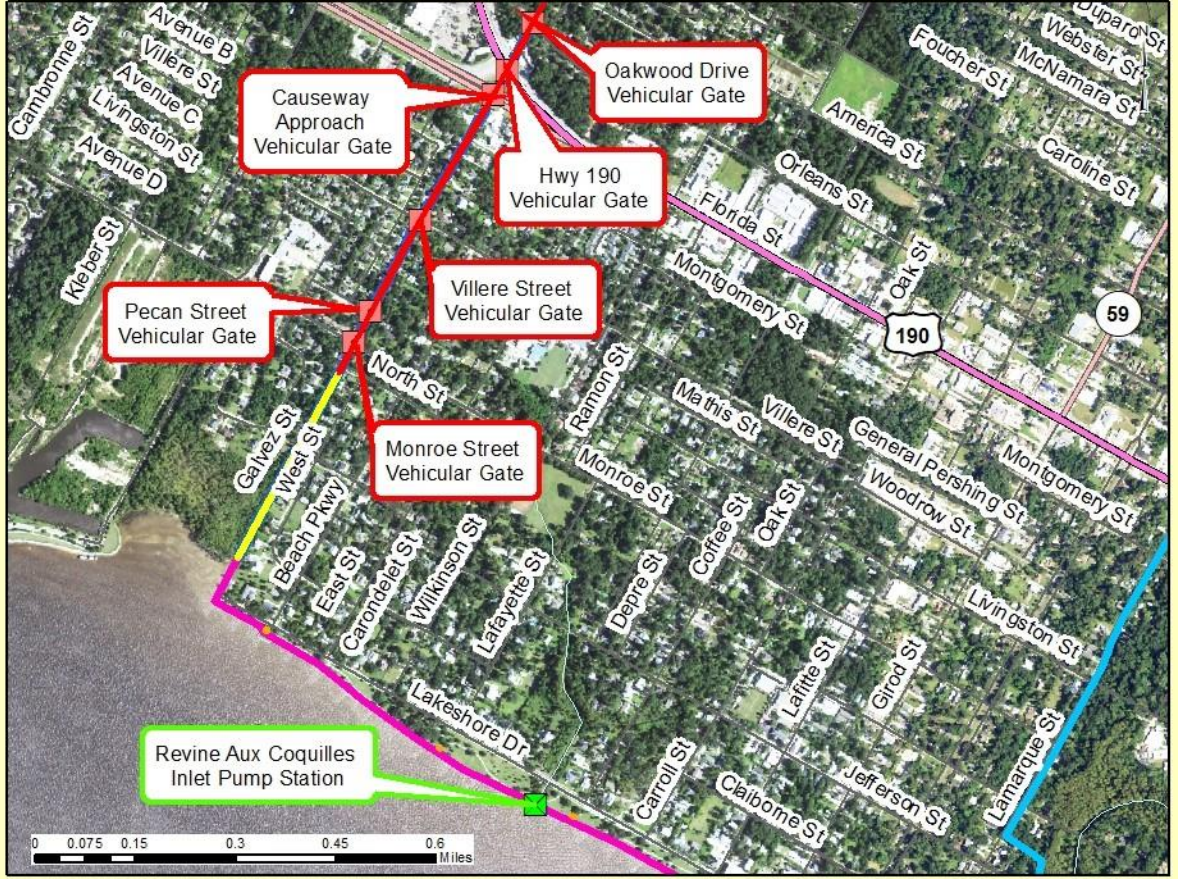
- Alt9b Pump Stations
- Alt9b Floodgates
- Alt9b Floodwalls
- Mandeville Seawall Replacement 9b
- Galvez Canal Seawall
- Little Bayou Castine Passive Barrier
- Mandeville Seawall ROW Footprint

Location Map



Date: 10/28/2020

St. Tammany Feasibility Study: Alternative 9c - Galvez Canal Floodwall 18ft Design (Forced Drainage)



U.S. Army Corps of Engineers
New Orleans District

Legend

- Alt9c Pump Stations
- Alt9c Floodgates
- Alt9c Floodwalls
- Galvez Canal Seawall 18ft
- Galvez Canal Floodwall 18ft
- Little Bayou Castine 18ft
- Mandeville Seawall Replacement 9c
- Galvez Canal Floodwall 18ft Design ROW Footprint

Location Map



Date: 12/11/2020

St. Tammany Feasibility Study: Alternative 9c - Little Bayou Castine 18 ft Design (Forced Drainage)



U.S. Army Corps of Engineers
New Orleans District

Legend

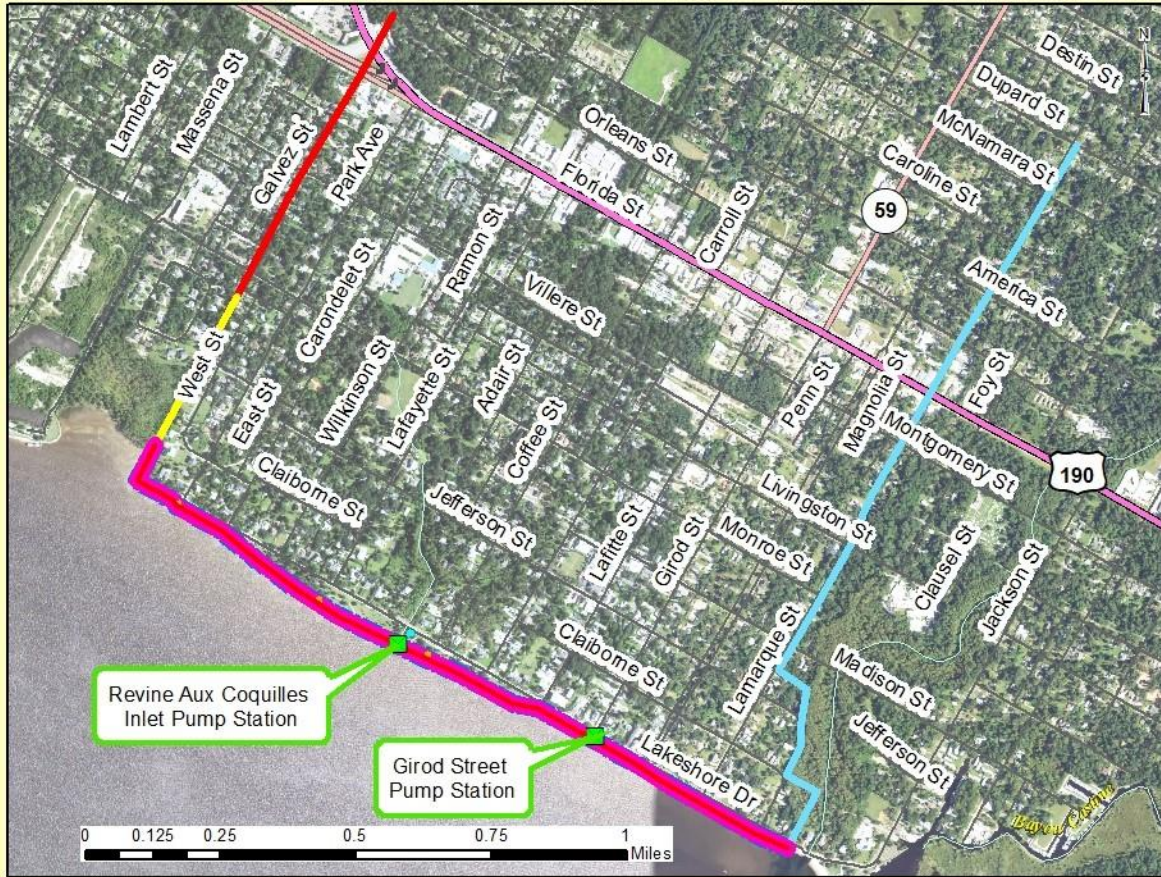
- Alt9c Floodgates
- Alt9c Pump Stations
- Alt9c Floodwalls
- Mandeville Seawall Replacement 9b
- Little Bayou Castine 18ft Design
- Little Bayou Castine 18ft Design ROW Footprint

Location Map



Date: 12/11/2020

St. Tammany Feasibility Study: Alternative 9c - Mandeville Sea Wall 18ft Design (Forced Drainage)



U.S. Army Corps of Engineers
New Orleans District

Legend

- Alt9c Pump Stations
- Alt9c Floodgates
- Alt9c Floodwalls
- Mandeville Seawall 18ft Replacement 9c
- Galvez Canal Seawall 18ft
- Galvez Canal Floodwall 18ft
- Little Bayou Castine 18ft
- Mandeville Seawall ROW Footprint

Location Map



Date: 10/28/2020